


Elevation CrossFit- New Jersey CrossFit Gym, Personal Training, Group Classes - Lodi

lodi

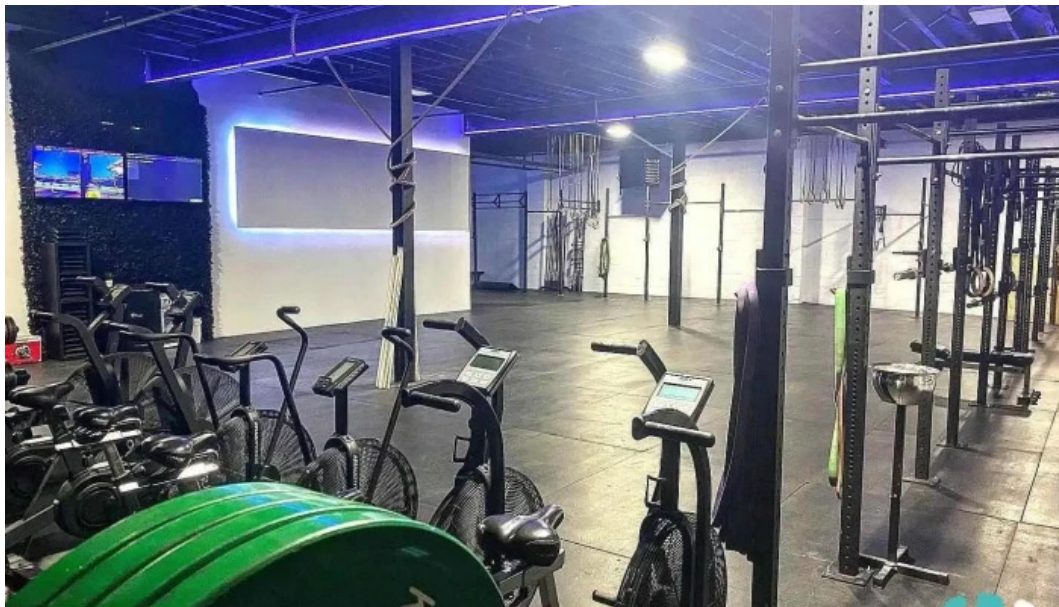
☐ I'm not a robot



RECAPTCHA

Published on: 19/05/25	Hits: 3402
Comments: 0	See comments
Votes: 378	Score: 4.9

https://www.electrofitness.com/gym/lodi/elevation-crossfit-new-jersey-crossfit-gym-personal-training-group-classes-lodi_311593.php



lodi

Elevation CrossFit- New Jersey CrossFit Gym, Personal Training, Group Classes - Lodi

Welcome to Elevation CrossFit: Lodi's Premier CrossFit Gym

If you're looking for a place that combines top-notch fitness training with a supportive community, **Elevation CrossFit** in Lodi, New Jersey, is the perfect destination. This gym not only focuses on personal and group training but also

emphasizes **accessibility** and inclusivity for all fitness levels.

From the Business Perspective

Elevation CrossFit identifies as both Latino-owned and women-owned, showcasing its commitment to diversity and representation within the fitness industry. This unique aspect sets it apart from other facilities, creating a welcoming space for everyone who walks through its doors.

Accessibility Features

Understanding the importance of accessibility, the gym boasts a **wheelchair-accessible car park**, ensuring that all members can easily access the facility. Whether you are a seasoned athlete or just starting your fitness journey, Elevation CrossFit is designed to accommodate your needs.

A Community Like No Other

The sense of community at Elevation CrossFit is palpable, with members consistently praising the encouraging atmosphere. Many have remarked on how they felt welcomed as new members, highlighting the supportive nature of both coaches and fellow attendees. With workouts that can be scaled to fit all levels, beginners can feel at ease while pushing their limits alongside experienced athletes.

Expert Coaching and Tailored Programs

One of the standout features of Elevation CrossFit is its highly trained staff. Coach Jose, in particular, has received outstanding reviews for his expertise and attention to detail. Members appreciate his clear instructions and willingness to support everyone in maintaining proper form and technique, essential for safety and results. The coaching staff employs a mix of old-school CrossFit principles along with modern adaptations, ensuring a comprehensive and effective workout.

Class Schedule and Membership Details

Open seven days a week with multiple classes offered throughout the day, Elevation CrossFit provides flexibility for busy schedules. While a **membership is required** to participate, the gym offers a free trial week for prospective members to experience the exhilarating workouts and vibrant atmosphere before committing.

Member Testimonials

Members frequently express their gratitude for the transformational impact of Elevation CrossFit on their fitness journeys. From significant body changes to enhanced stamina and strength, individuals have reported remarkable results. The encouragement from coaches and the camaraderie among members create a motivating environment that keeps everyone coming back for more.

Conclusion: Join the Elevation CrossFit Family

If you're in the Lodi area and seeking a gym that prioritizes accessibility, community, and expert coaching, look no further than Elevation CrossFit. Join the movement today and discover how this amazing facility can help you reach your fitness goals!

Our address is

25 Union St Unit 4, 07644 Lodi, New Jersey - United States (US)

The contact line of the respective **Gym** is +1201-994-5220

And if you want to send a WhatsApp, you can do so at +1201-994-5220

Our service hours are:

Day	Hours
Monday	6?AM–6?PM
Tuesday	5?AM–10?PM
Wednesday	5?AM–10?PM
Thursday	5?AM–10?PM
Friday	5?AM–10?PM
Saturday	5?AM–10?PM
Sunday	6?AM–6?PM

The website is Elevation CrossFit- New Jersey CrossFit Gym, Personal Training, Group Classes

If necessary to update any element that you consider is not precise concerning this page, we urge you to send us a message so that we will correct

it promptly. In advance thank you very much.

Images



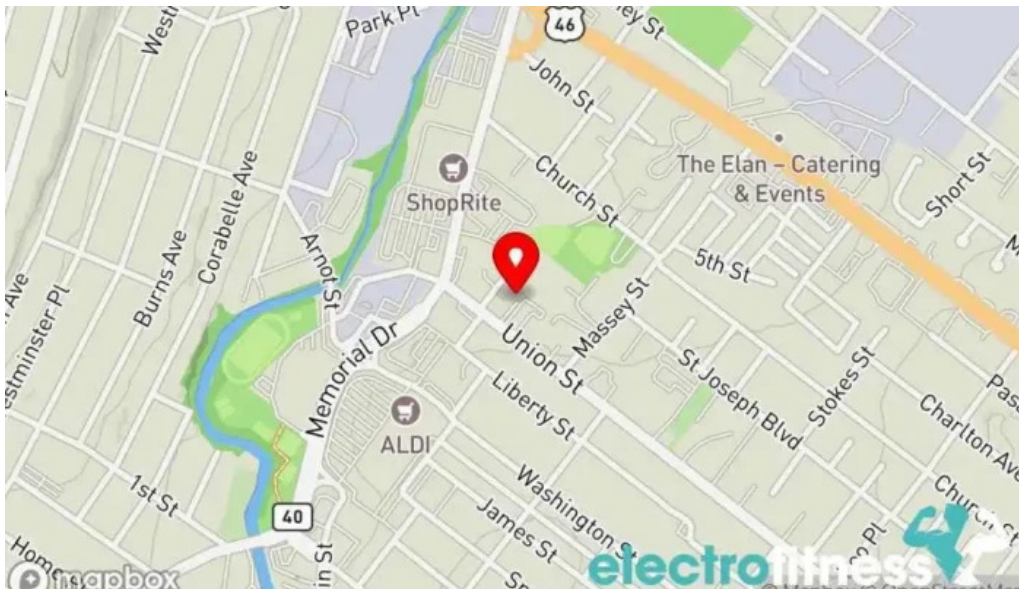
Elevation crossfit new jersey crossfit gym personal training group classes lodi



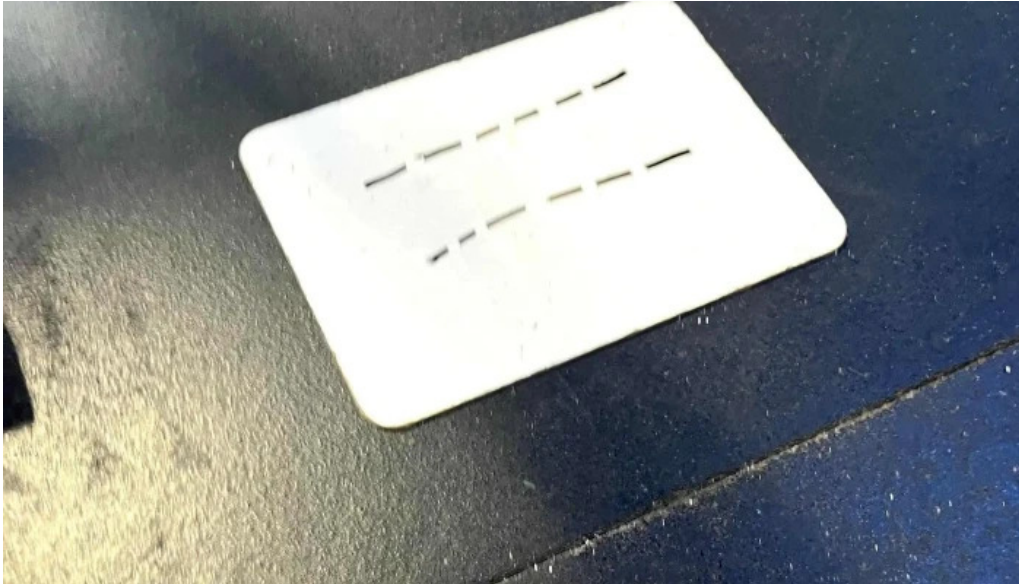
Elevation crossfit new jersey crossfit gym personal training group classes videos



Elevation crossfit new jersey crossfit gym personal training group classes street view 360deg



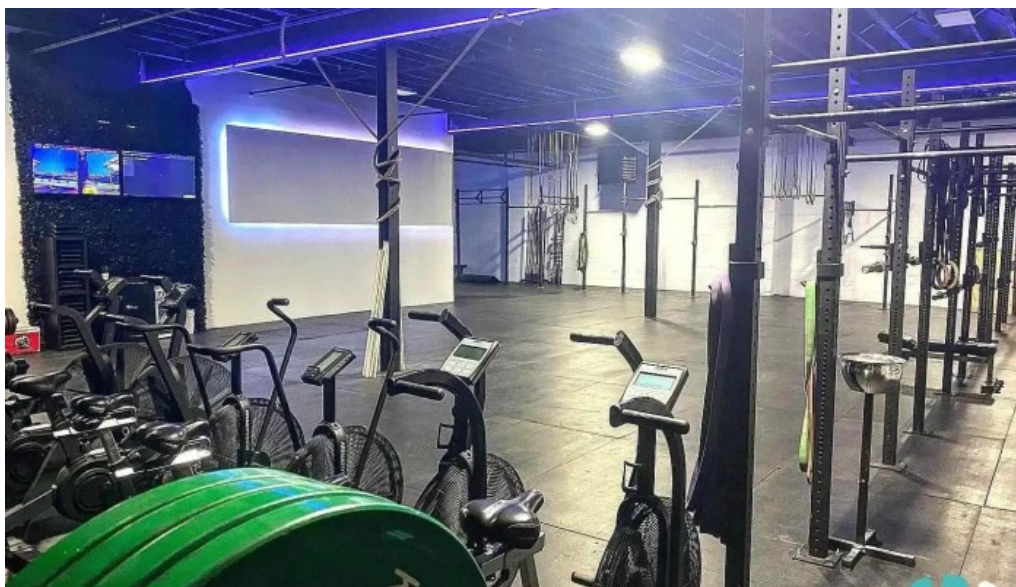
Elevation crossfit new jersey crossfit gym personal training group classes map



Elevation crossfit new jersey crossfit gym personal training group classes gym



Elevation crossfit new jersey crossfit gym personal training group classes by owner



Elevation crossfit new jersey crossfit gym personal training group classes all

Tags

Wheelchair-accessible car park, Planning, Identifies as Latino-owned, From the business, Membership required, Identifies as women-owned, Accessibility

Related content

5.0 * *Elevation Physical Therapy - Waitsfield*

4.7 * *Elevation Studios Alma - Alma*

5.0 * *Elevation Fitness Studio - Spokane*

5.0 * *Asap Fitness - Lodi*

5.0 * *Kentucky Athletic Group - Somerset*

5.0 * *Wolf Health & Performance Group - Alachua*

4.6 * *Jersey Fitness - Pennsville*

5.0 * *Carley Newton Group Fitness - Portage*

5.0 * *Kvell Group Fitness, Nutrition, and Personal Training - Boise*

5.0 * *BodyFit Group & Fitness Training - Meridian*

Categories

academic department

acupuncture clinic
after school program
amusement center
amusement park ride
animal feed store
apartment building
apartment complex
aquatic centre
arena
art gallery
association / organization
athletic club
auditorium
bar
basketball club
basketball court
batting cage center
body shaping class
boot camp
boxing club
boxing gym
boxing ring
children's party service
chiropractor
church
club
coffee shop
college
community center
convenience store
corporate office
counselor
country club
coworking space
cultural center
dance club
dance company
dance school
day spa
disability services and support organization
disc golf course
dollar store

educational institution
elementary school
exercise equipment store
facial spa
firearms academy
fitness
fitness center
fitness equipment wholesaler
food producer
foot care
gated community
golf club
golf course
golf instructor
grocery store
gym
gymnasium school
gymnastics center
gymnastics club
hair salon
health consultant
health food restaurant
health food store
health spa
hiking area
hospital
hotel
indoor cycling
jujitsu school
karate club
karate school
kennel
kickboxing school
kinesiologist
kinesiotherapist
martial arts club
martial arts school
massage spa
massage therapist
medical group
medical spa
meditation center

metaphysical supply store
muay thai boxing gym
non-profit organization
nutritionist
outdoor sports store
outdoor swimming pool
park
parking lot
parkour spot
personal trainer
pharmacy
physical fitness program
physical therapist
physical therapy clinic
pickleball court
pilates studio
private golf course
psychotherapist
public educational institution
public swimming pool
recreation center
rehabilitation center
resort hotel
rock climbing
rock climbing gym
rv park
sauna
school
school district office
self defense school
senior citizen center
shooting range
shopping mall
soccer club
social club
software company
spa
spa and health club
sporting goods store
sports club
sports complex
sports massage therapist

sports medicine clinic
sports nutrition store
sports school
summer camp organizer
supermarket
swimming facility
swimming instructor
swimming pool
swimming school
taekwondo school
tanning salon
tennis club
thrift store
training centre
vitamin & supplements store
water park
weight loss service
weightlifting area
wellness center
wellness program
women's organization
women's personal trainer
wrestling school
yoga instructor
yoga studio
youth center
youth organization