


## Atalaya Trail Head at St Johns College, Santa Fe, Nm. - Santa Fe

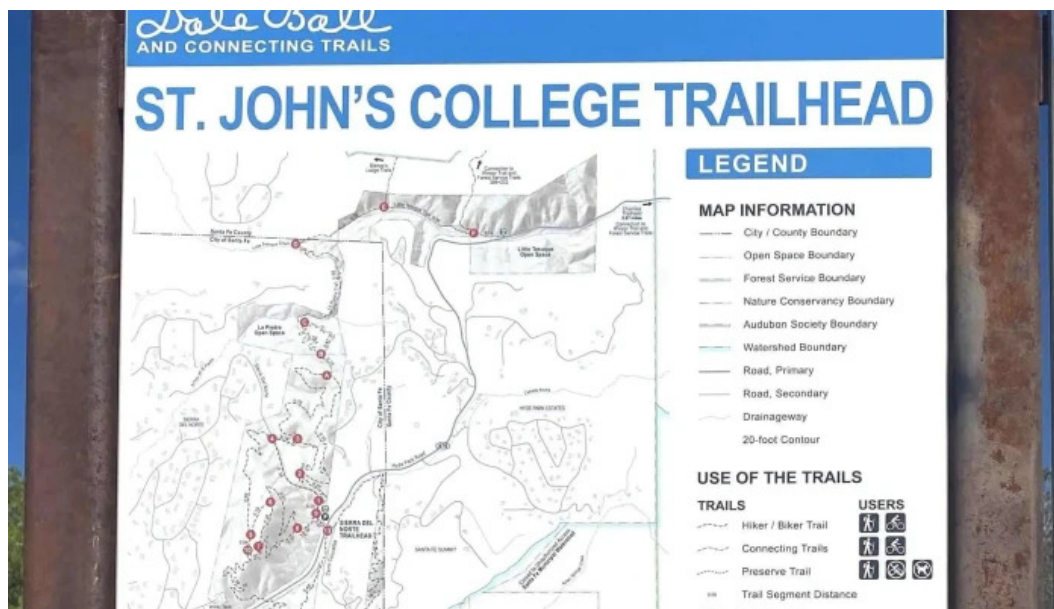
santa fe

☐ I'm not a robot



Published on: 28/04/25	Hits: 80
Comments: 0	See comments
Votes: 10	Score: 4.7

[https://www.electrofitness.com/gym/santa-fe/atalaya-trail-head-at-st-johns-college-santa-fe-nm-santa-fe\\_235225.php](https://www.electrofitness.com/gym/santa-fe/atalaya-trail-head-at-st-johns-college-santa-fe-nm-santa-fe_235225.php)



santa fe

## Atalaya Trail Head at St Johns College, Santa Fe, Nm. - Santa Fe

### Exploring Atalaya Trail Head at St. John's College, Santa Fe, NM

Santa Fe, New Mexico, is known for its stunning landscapes and outdoor adventures. One of the most accessible trails in the area is the **\*\*Atalaya Trail Head\*\***, located at St. John's College. This trail offers a delightful hiking experience for both seasoned hikers and beginners alike.

### Accessibility Features

One of the significant advantages of the Atalaya Trail Head is its **\*\*wheelchair-accessible car park\*\***. This allows individuals with mobility challenges to enjoy the beauty of the trail without significant obstacles. The parking area also features port-a-potties, ensuring that all hikers have access to necessary facilities before they embark on their journey.

## **A Trail for Everyone**

For many hikers, like those who have visited Atalaya Trail, the lower end of the trail is perfect for a comfortable outing. As one visitor remarked, "Easy is in my wheelhouse these days," highlighting that the Atalaya Trail fits well within the comfort levels of older hikers. Its manageable incline makes it an ideal choice for those looking for a less strenuous hike.

## **Scenic Views and Natural Beauty**

Reaching the top of Atalaya Trail rewards hikers with breathtaking views of Northern New Mexico's stunning landscape. As noted by another enthusiastic visitor, "Once you make it to the top, it is BEAUTIFUL!" The abundance of flowers during the end of September adds a vibrant touch to the scenery, making this trail a must-see for anyone visiting Santa Fe.

## **Preparation Tips**

While the trail is generally safe and well-marked, preparation is key for an enjoyable hike. Visitors emphasize the importance of bringing **\*\*plenty of water\*\*** during hot months to stay hydrated. Early morning or late afternoon hikes can often provide a more comfortable temperature.

## **Conclusion**

Whether you're an experienced hiker or new to the trails, Atalaya Trail Head at St. John's College offers a fantastic outdoor experience. With its accessibility features, scenic beauty, and positive reviews from fellow hikers, this trail should be on everyone's itinerary when exploring Santa Fe. Don't miss the chance to enjoy this wonderful hike!

## **Our business is at**

1164-1184 Camino De Cruz Blanca, 87505 Santa Fe, New Mexico - United States (US)

## **We look forward to seeing you at:**

Day Hours  
Monday  
7?AM–3?PM  
Tuesday

9:30?AM–1?PM

Wednesday

5:30?AM–8?PM

Thursday

5:30?AM–8?PM

Friday

5:30?AM–8?PM

Saturday

5:30?AM–8?PM

Sunday

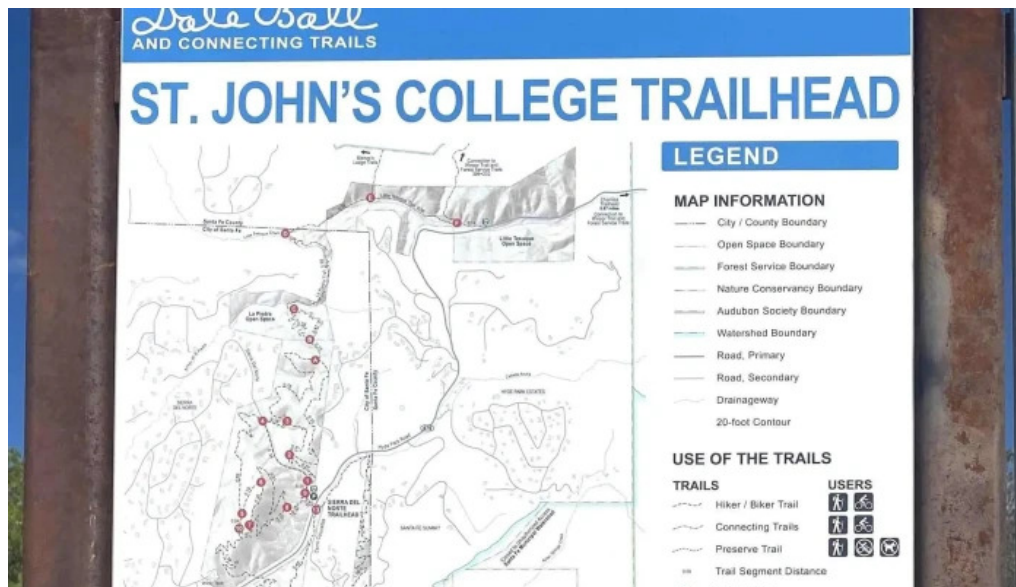
5:30?AM–8?PM

In case you want to adjust any element that you believe is incorrect concerning this page, please forward a message so that we will correct it quickly. Thanks beforehand thanks for your cooperation.

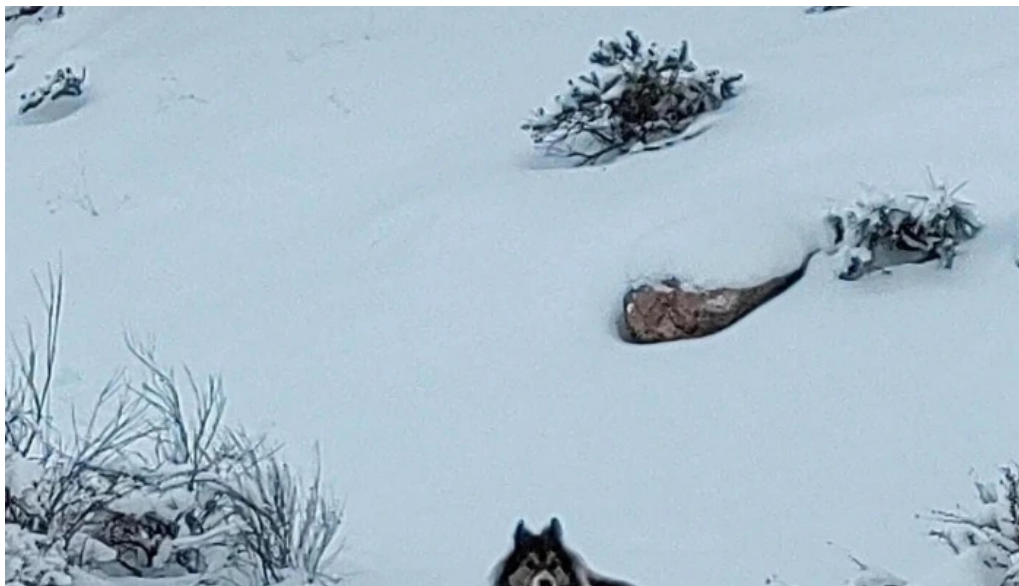
## Images



*Atalaya trail head at st johns college santa fe nm street view 360deg*



*Atalaya trail head at st johns college santa fe nm santa fe*

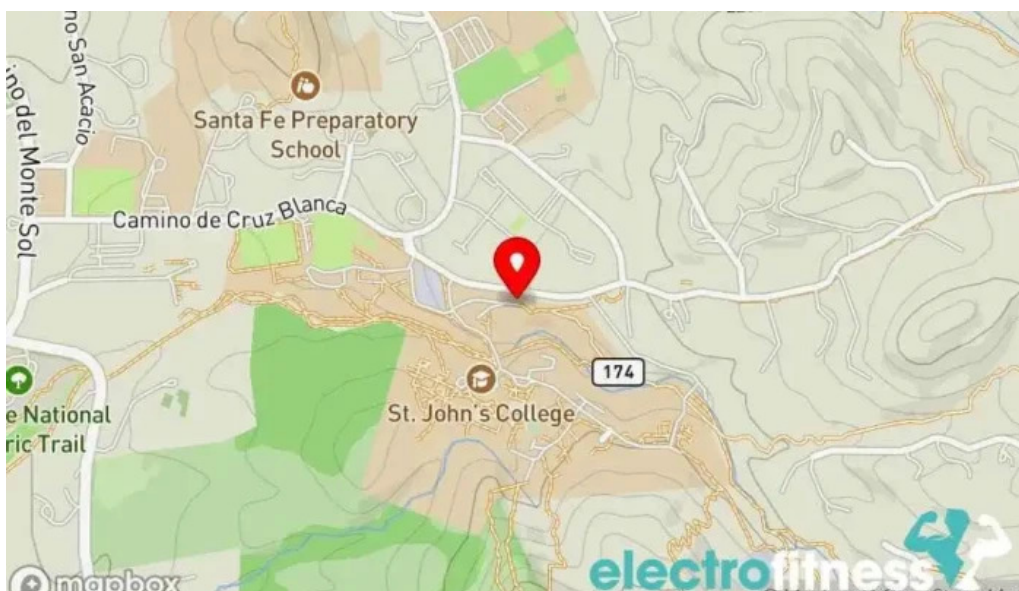


*Atalaya trail head at st johns college santa fe nm reviews*





*Atalaya trail head at st johns college santa fe nm prices*



*Atalaya trail head at st johns college santa fe nm map*



*Atalaya trail head at st johns college santa fe nm location*



*Atalaya trail head at st johns college santa fe nm instagram*





*Atalaya trail head at st johns college santa fe nm how to get there*

Trailheads open: 30 minutes before sunrise to 30 minutes after sunset	Las veredas se abren: 30 minutos antes de que sale el sol y hasta 30 minutos despues de que se pone el sol
<p><b>PLEASE</b></p> <p><b>Stay on trails</b></p> <p><b>Dogs must be kept on a leash</b> Ordinance 5-5.4</p> <p><b>Pet owners must clean up and properly dispose of all waste</b> Ordinance 5-7.6</p> <p><b>No littering or illegal dumping</b> Ordinance 10-1.6</p> <p><b>No alcohol consumption</b> Ordinance 23-6</p> <p><b>No excessive noise</b> Ordinance 10-2.4</p> <p><b>No fires of any kind, nor use of fireworks</b></p>	<p><b>FAVOR DE</b></p> <p><b>Caminar unicamente en las veredas</b></p> <p><b>Mantener su perro asegurado con correa</b> Ordinanza 5-5.4</p> <p><b>Recoger el excremento de su mascota</b> Ordinanza 5-7.6</p> <p><b>No dejar en desorden o tirar basura</b> Ordinanza 10-1.6</p> <p><b>No consumir bebidas alcohólicas</b> Ordinanza 23-6</p> <p><b>No hacer ruido excesivo</b> Ordinanza 10-2.4</p> <p><b>No prender fuegos de cualquier tipo o quemar cohetes</b></p> <p>Cuota: \$500</p>

*Atalaya trail head at st johns college santa fe nm gym*



*Atalaya trail head at st johns college santa fe nm all*

## Tags

*Accessibility, Wheelchair-accessible car park*

## Related content

---

**4.2 \*** *Indian Head Weight House Fitness Center - Indian Head*

---

**3.9 \*** *Fitness Trail - Denver*

---

**4.9 \*** *Muscle House and Fitness - Indian Head*

---

**4.6 \*** *Acalanes Ridge Open Space Acalanes South Trail - Lafayette*

---

**4.8 \*** *Amsler Campus Center Gym - North Adams*

---

**5.0 \*** *BoxNKick - New Bedford*

---

**4.4 \*** *Anchors Kennel - Accokeek*

---

**5.0 \*** *Brandis Touch Studios - The Integrated Wellness Spa - Fort Washington*

---

**4.4 \*** *McAdoo Fitness Center - Minot Air Force Base*

---

**4.7 \*** *Powerform - Oakland*

## Categories

academic department
---------------------



acupuncture clinic
after school program
amusement park ride
animal feed store
aquatic centre
arena
association / organization
athletic club
auditorium
bar
basketball club
body shaping class
boot camp
boxing club
boxing gym
boxing ring
children's party service
chiropractor
church
club
coffee shop
community center
convenience store
counselor
country club
coworking space
cultural center
dance company
dance school
day spa
dollar store
elementary school
exercise equipment store
facial spa
firearms academy
fitness
fitness center
food producer
golf club
golf course
golf instructor
grocery store

gym
gymnastics center
hair salon
health consultant
health food restaurant
health spa
hiking area
hospital
hotel
indoor cycling
jujitsu school
karate club
karate school
kennel
kickboxing school
kinesiologist
kinesiotherapist
martial arts club
martial arts school
massage therapist
medical spa
meditation center
metaphysical supply store
muay thai boxing gym
non-profit organization
nutritionist
park
parking lot
personal trainer
pharmacy
physical fitness program
physical therapist
physical therapy clinic
pickleball court
pilates studio
private golf course
public educational institution
recreation center
rehabilitation center
rock climbing gym
sauna
school district office

self defense school
shooting range
shopping mall
soccer club
spa
spa and health club
sporting goods store
sports club
sports complex
sports medicine clinic
sports nutrition store
sports school
summer camp organizer
supermarket
swimming instructor
swimming school
tennis club
thrift store
training centre
vitamin & supplements store
weight loss service
weightlifting area
wellness center
wellness program
women's personal trainer
yoga instructor
yoga studio
youth organization