

Solcore Fitness - Santa Fe

santa fe

☐ I'm not a robot



RECAPTCHA

Published on: 28/04/25	Hits: 350
Comments: 0	See comments
Votes: 35	Score: 5

https://www.electrofitness.com/physical-fitness-program/santa-fe/solcore-fitness-santa-fe_234972.ph

p



santa fe

Solcore Fitness - Santa Fe

Discover the Benefits of SolCore Fitness in Santa Fe, New Mexico

SolCore Fitness is a unique physical fitness program located in Santa Fe, New Mexico, dedicated to improving the lives of its members through personalized and innovative training methods. This Black-owned business offers a welcoming environment equipped with ****wheelchair-accessible entrances****, a ****wheelchair-accessible car park****, and ****gender-neutral toilets****, ensuring that everyone, regardless of their background or physical ability, can participate in

their programs.

Comprehensive On-Site Services and Accessibility

At SolCore Fitness, an appointment is required for most services, ensuring that each member receives dedicated attention tailored to their individual needs. The facility is not only designed to be ****LGBTQ+ friendly****, but also focuses heavily on accessibility, offering a ****wheelchair-accessible toilet**** to cater to all visitors. This commitment to inclusivity creates a ****crowd**** that reflects the diverse community of Santa Fe.

Online Classes for Flexibility

In addition to in-person training, SolCore Fitness provides ****online classes****, making it easier than ever for individuals to engage with their fitness journey from the comfort of their own home. This flexibility allows members to continue their training even if they can't physically attend the center.

A Supportive Community for Physical Transformation

Members of SolCore Fitness have reported incredible transformations in their physical health. One participant, after struggling with chronic pain and limited mobility, found relief through individualized exercises designed by Ekemba Soh, the owner and instructor. Many have praised his expertise and hands-on approach, stating: > "After six months of classes, I continue to improve. I walk better, I move with more ease, I can sit longer, pain is reduced... It's my sanctuary." This supportive community thrives on the connection among members, fostering friendships and encouragement throughout their fitness journeys.

A Focused Approach to Healing and Wellness

The training at SolCore is built around the ELDOA method, which promotes strength and flexibility while addressing chronic pain issues. Participants have experienced significant improvements in their posture, mobility, and overall well-being. One member shared their experience: > "Within a month, the knee pain diminished significantly... My body is stronger, my mind is sharp." SolCore Fitness serves as a holistic approach to fitness, integrating functional movement practices aimed at restoring balance to the body.

Planning Your Visit to SolCore Fitness

If you're contemplating a visit to SolCore Fitness, you'll quickly find that the team is committed to your success. With a range of ****on-site services**** dedicated to individual needs, every member is encouraged to explore their potential. The welcoming atmosphere makes it easy to focus on wellness without pressure or competition.

Join SolCore Fitness Today!

Whether you're recovering from an injury, seeking to improve your overall health, or just starting your fitness journey, SolCore Fitness is here to support you. With a strong emphasis on community and inclusivity, this program is designed for everyone, offering the ****amenities**** necessary to foster long-term success. Take advantage of the free trial classes and discover for yourself how SolCore can change your life! Embrace a healthier, happier you today!

Our business is located at

1091 Siler Rd a4, 87507 Santa Fe, New Mexico - United States (US)

The contact phone of said **Physical fitness program** is +1505-577-2171
And if you want to send a WhatsApp, you can do so at +1505-577-2171

We look forward to seeing you at:

Day	Hours
Monday	9–10?AM
Tuesday	Closed
Wednesday	8?AM–5?PM
Thursday	8?AM–6:30?PM
Friday	8?AM–5?PM
Saturday	8?AM–6:30?PM
Sunday	8?AM–5?PM

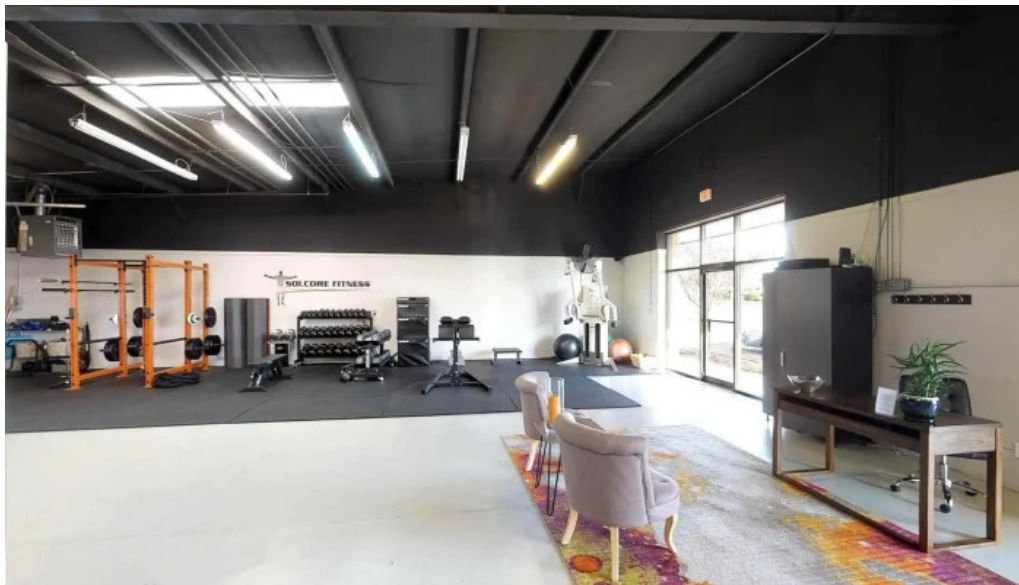
The website is Solcore Fitness

If you need to change any information that you believe is not precise regarding this site, we kindly request forward a message and we will handle it quickly. With anticipation we appreciate it.

Images



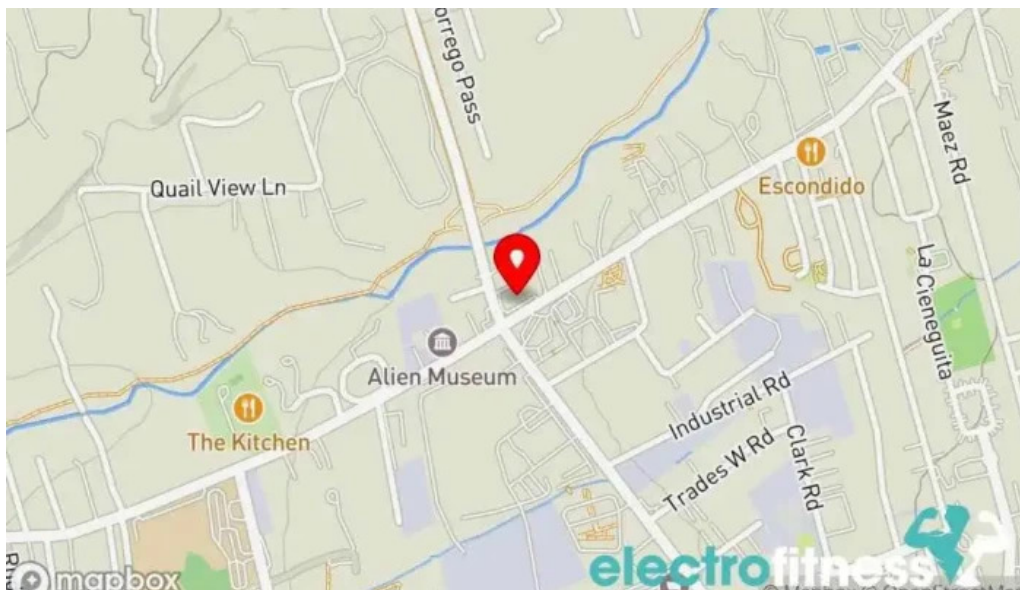
Solcore fitness videos



Solcore fitness street view 360deg



Solcore fitness santa fe



Solcore fitness map



Solcore fitness by owner



Solcore fitness all

Tags

Toilet, Amenities, Gender-neutral toilets, Identifies as Black-owned, LGBTQ+ friendly, Planning, Wheelchair-accessible car park, From the business, Accessibility, Wheelchair-accessible entrance, Online classes, Service options, Wheelchair-accessible toilet, Appointment required, On-site services, Crowd

Related content

3.8 *	<i>Black Belt Academy - Fort Washington</i>
5.0 *	<i>Black Flag Strength - Hanover</i>
4.5 *	<i>Black Belt Academy - Waldorf</i>
3.5 *	<i>Crunch Fitness - Boise Black Eagle - Boise</i>
4.9 *	<i>Sweat Dc - Park View - Washington</i>
4.9 *	<i>Shabach Yoga Studio - Waldorf</i>
5.0 *	<i>American Martial Arts Gym - Waldorf</i>
5.0 *	<i>Studio Ex Cycle & Group Fitness - Hyannis</i>
5.0 *	<i>Ignite Fitness La - Lafayette</i>
4.7 *	<i>Fit 360 Dc - Washington</i>

Categories

academic department
acupuncture clinic
amusement park ride
animal feed store
aquatic centre
arena
association / organization
athletic club
auditorium
bar
basketball club
body shaping class
boot camp
boxing club
boxing gym
boxing ring
children's party service
chiropractor
church
club
coffee shop
community center
convenience store
counselor
country club
coworking space
cultural center
dance company
dance school
day spa
dollar store
elementary school
exercise equipment store
facial spa
firearms academy
fitness
fitness center
food producer
golf club
golf course
golf instructor
grocery store

gym
gymnastics center
hair salon
health consultant
health food restaurant
health spa
hiking area
hospital
hotel
indoor cycling
jujitsu school
karate club
karate school
kennel
kickboxing school
kinesiologist
kinesiotherapist
martial arts club
martial arts school
massage therapist
medical spa
meditation center
metaphysical supply store
muay thai boxing gym
non-profit organization
nutritionist
park
parking lot
personal trainer
pharmacy
physical fitness program
physical therapist
physical therapy clinic
pickleball court
pilates studio
private golf course
public educational institution
recreation center
rehabilitation center
rock climbing gym
sauna
school district office

self defense school
shooting range
shopping mall
soccer club
spa
spa and health club
sporting goods store
sports club
sports complex
sports medicine clinic
sports school
summer camp organizer
supermarket
swimming instructor
swimming school
tennis club
thrift store
training centre
vitamin & supplements store
weight loss service
weightlifting area
wellness center
wellness program
women's personal trainer
yoga instructor
yoga studio
youth organization